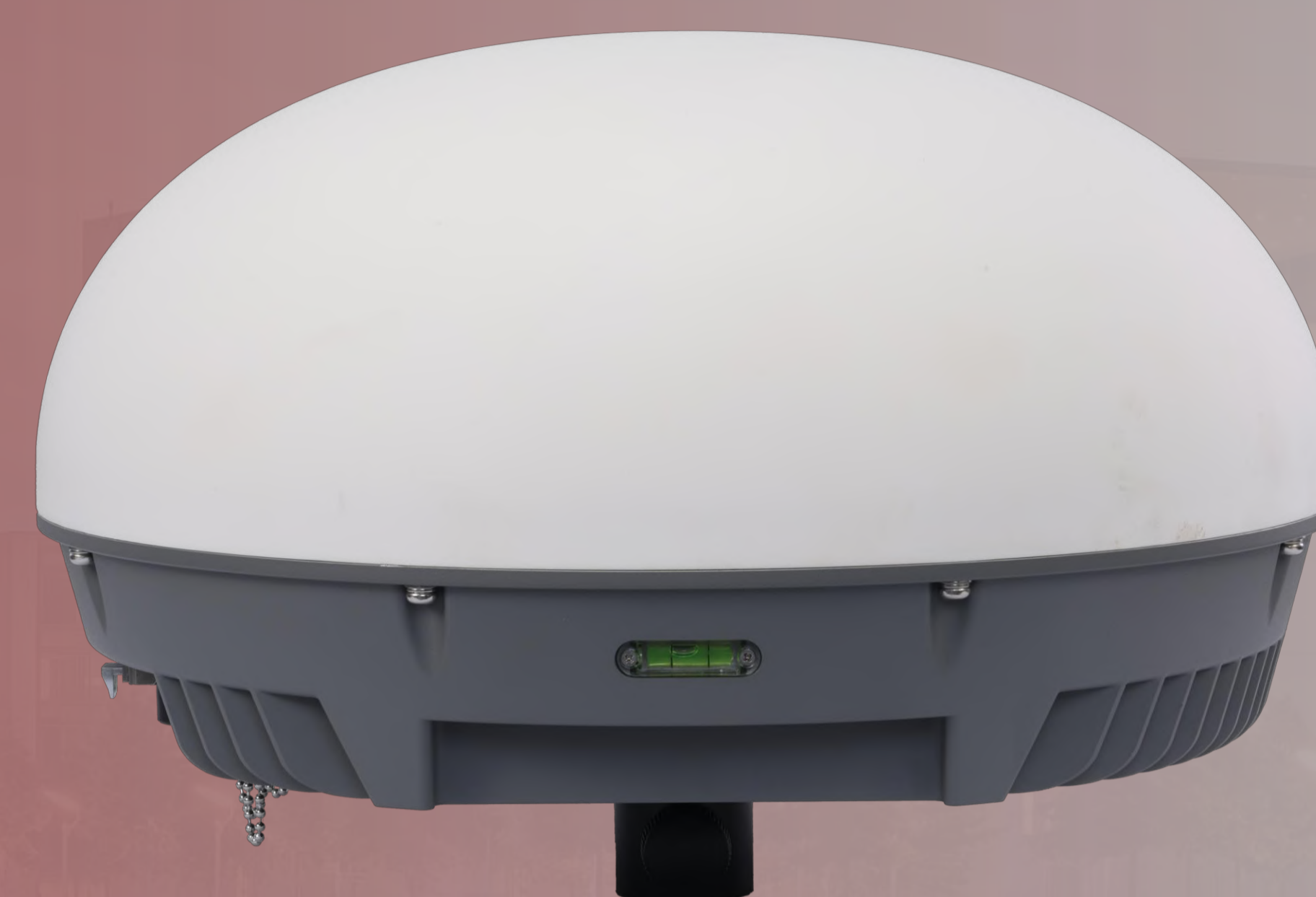


NAVIGATION SPOOFER

APATE S30

The navigation spoofer uses satellite navigation simulation technology to emit navigation decoy signals to drive away or force drones to land, preventing drones outside the control area from entering while drones in the control area cannot take off.



FEATURES

Various Deception Effects

Directed expulsion; no entry area; no flying area; navigation jamming; fixed-point trapping

Complete Navigation Coverage

Supports multiple navigation system, including GPS, GLONASS, QZSS, BDS, GALILEO

Long-distance Deception

The longest distance can reach 30KM (distance can be customized)

Multi-device Linkage

Automatically link with radar, radio detector and radio jammer

SPECIFICATIONS

Navigation Frequency	GPS L1/L2/L5, GLO L1/L2, BDS B1/B2, GALILEO E1, QZSS L1 (customizable)
Decoy Radius	1-30km (adjustable)
Navigation Jamming Radius	1-3km (adjustable)
Decoy Response Time	≤10s
Working Temperature	-40°C~+70°C
Protection Level	IP66
Dimension (L*W*H)	388mm*388mm*214mm

